

# DIAPHRAGM VALVE TYPE 16

- NEAR-LINEAR FLOW CHARACTERISTICS
- COMPACT BODY ALLOWS FOR INSTALLATION IN LIMITED PIPING SPACE.
- EXCELLENT OPEN/CLOSE DURABILITY TO WITHSTAND MORE THAN 1,000,000 CYCLES OF OPENING AND CLOSING
- ALL-PLASTIC BODY ENSURES EXCELLENT CORROSION RESISTANCE.

## BASIC SPECIFICATIONS

**VALVE TYPE** ————— **DIAPHRAGM VALVE TYPE 16**

**SIZE** ————— **15 mm—50 mm (1/2 inch—2 inch)**

**BODY MATERIAL** ————— **U-PVC**

**SEAL MATERIAL / DIAPHRAGM** ————— **EPDM** **PTFE**

**O-RING** ————— **EPDM** **FKM**

**CONNECTION / FLANGED** ————— **JIS10K, DIN PN10, ANSI CLASS150**

**SOCKET** ————— **JIS, DIN, ANSI**

**THREADED** ————— **Rc, Rp, NPT**

	FLUID TEMPERATURE	MAXIMUM WORKING PRESSURE (NORMAL TEMPERATURE) MPa(kgf/cm <sup>2</sup> )		CONNECTION METHOD		
		15 mm - 25 mm	40 mm, 50 mm	FLANGED	SOCKET	THREADED
U-PVC	0°C ~ 50°C	0.5 {5.1}	0.4 {4.1}	○	○	○

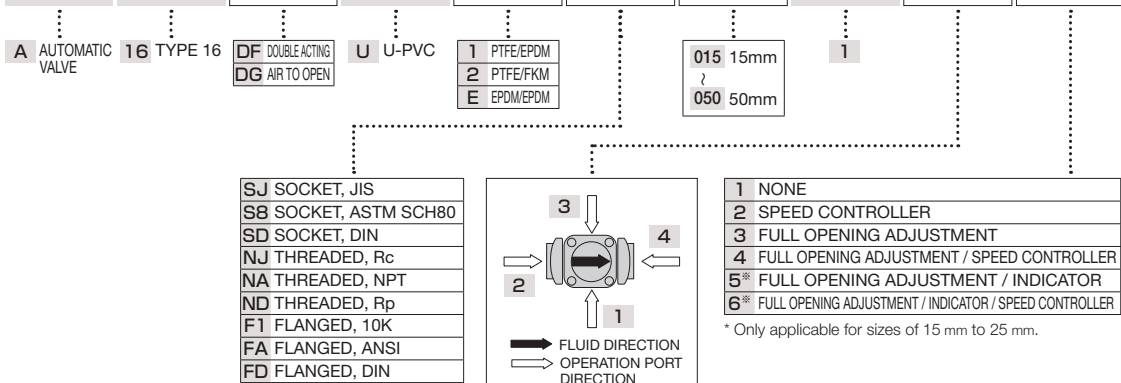
**NOTE** The maximum working pressure is the value including the water hammer pressure. Be careful that the maximum working pressure is not exceeded during use.  
 \* Concerning the allowable pressure for each temperature and material, see the technical documents at the end of this catalog.



## COMPATIBLE ACTUATOR **AUTOMATIC**

**PNEUMATIC** **TYPE AD** For detailed specifications, see P.121

PRODUCT MODEL CODE LIST	ACTUATION	TYPE	ACTION / POWER SOURCE	BODY MATERIAL	SEAL MATERIAL	CONNECTION	SIZE	LUB. FREE	OPERATION PORT DIRECTION	OPTION
<b>AUTOMATIC</b>	A	16	**	U	*	**	***	1	*	*



AUTOMATIC

PNEUMATIC

TYPE AD

DOUBLE ACTING

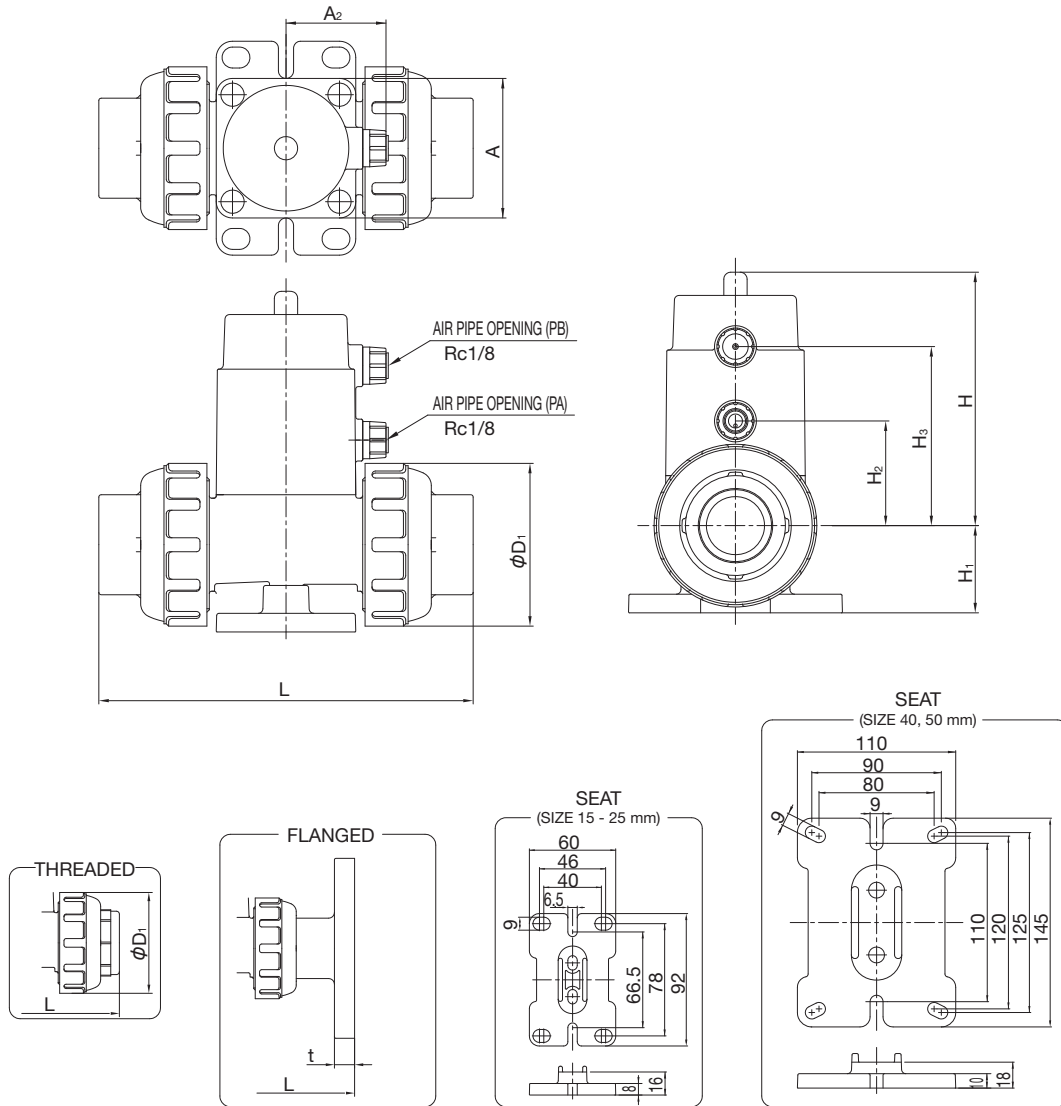
AIR TO OPEN

AIR TO CLOSE

# DIAPHRAGM VALVE TYPE 16

TYPE—A16D

CONNECTION / FLANGED, SOCKET, THREADED—JIS, DIN, ANSI



■ JIS, DIN (Unit: mm)

mm	D <sub>1</sub>	H	H <sub>1</sub>	H <sub>2</sub>	H <sub>3</sub>	A	A <sub>2</sub>	JIS			DIN				
								FLANGED JIS10K L	SOCKET L	THREADED L	FLANGED PN10 L	SOCKET L	THREADED L		
15	48	79.0	33.0	33	60	□50	38	158	12	124.4	117.0	145	12	117	117
20	60	108.0	36.5	44	76	□60	43	191	14	147.0	139.0	169	14	138	139
25	70	109.0	37.5	45	77	□60	43	205.5	14	163.5	149.5	178.5	14	149.5	149.5
40	100	161.5	53.0	68	115	□95	60	264	16	241.0	215.0	252	16	216	215
50	126	188.5	66.0	83	137	□115	70.5	297	16	283.0	260.0	293	16	260	260

■ ANSI (Unit: inch)

inch	mm	D <sub>1</sub>	H	H <sub>1</sub>	H <sub>2</sub>	H <sub>3</sub>	A	A <sub>2</sub>	ANSI			
									FLANGED L	SOCKET L	THREADED L	
1/2	15	1.89	3.11	1.30	1.30	2.36	1.97	1.49	6.22	0.47	5.04	4.61
3/4	20	2.36	4.25	1.44	1.73	2.99	2.36	1.69	7.52	0.55	5.83	5.47
1	25	2.76	4.29	1.48	1.77	3.03	2.36	1.69	8.09	0.55	6.44	5.89
1 1/2	40	3.94	6.36	2.09	2.68	4.53	3.74	2.36	10.39	0.63	9.29	8.46
2	50	4.96	7.42	2.60	3.27	5.39	4.53	2.77	11.69	0.63	10.71	10.24